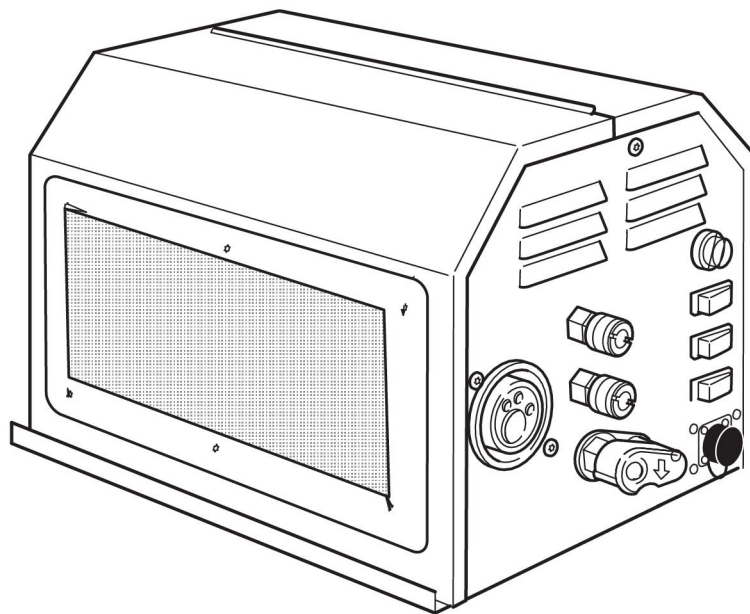




Aristo®

RoboFeed 3004w



Spare parts list

The wire feed unit is renamed:

New name	Old name
RoboFeed 3004w	Aristo RoboFeed 30-4

Ordering no.	Product
0461 000 880	RoboFeed 3004w, 23 pole
0461 000 881	RoboFeed 3004w, 12 pole
0461 000 890	RoboFeed 3004w, 23 pole from serial no. 745-xxx-xxxx
0461 000 891	RoboFeed 3004w, 12 pole from serial no. 745-xxx-xxxx, 310-xxx-xxxx

Spare parts are to be ordered through the nearest ESAB agency. Kindly indicate type of unit, serial number, denominations and ordering numbers according to the spare parts list.

Maintenance and repair work should be performed by an experienced person, and electrical work only by a trained electrician. Use only recommended spare parts.

TABLE OF CONTENTS

SPARE PARTS **4**

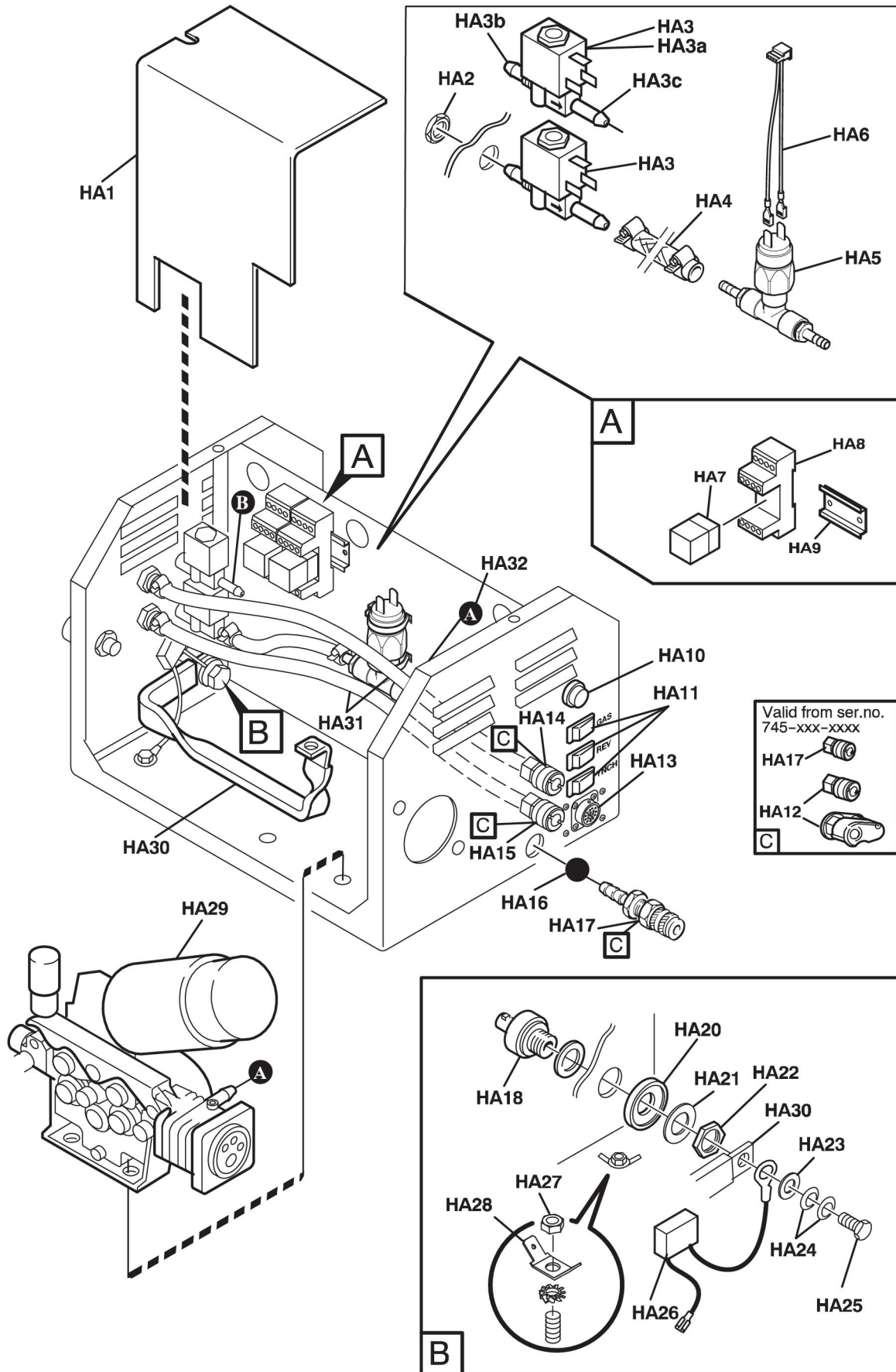
WEAR PARTS..... **14**

ACCESSORIES **17**

SPARE PARTS

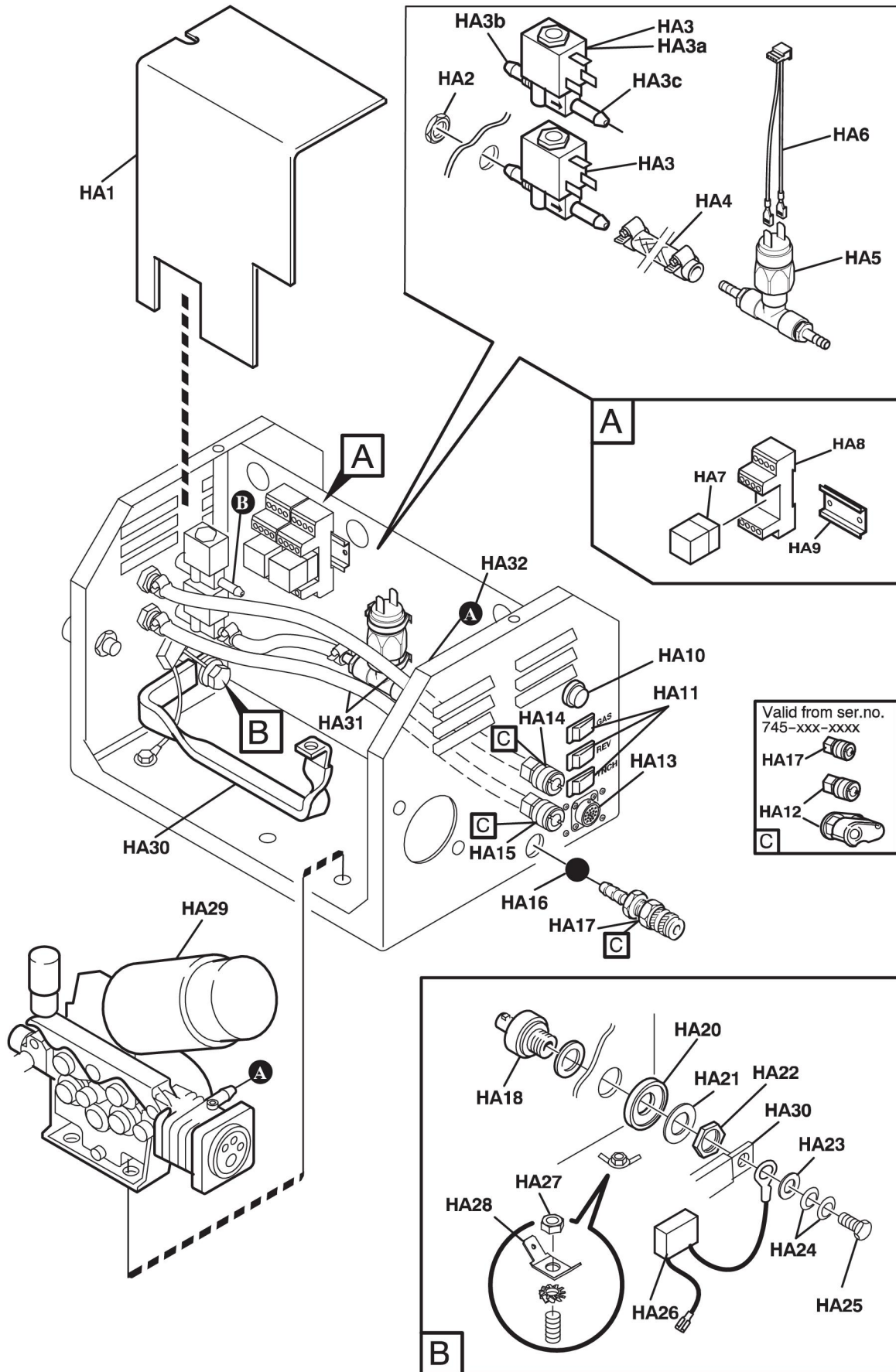
C = Component designation in the circuit diagram

Item	Qty	Ordering no.	Denomination	Notes	C
HA1	1	0461 035 001	Cover	Before ser.no. 745-xxx-xxxx	
	1	0461 035 002	Cover	From ser.no. 745-xxx-xxxx	
HA2	2		Nut	MF10×1 Incl. in item HA3	
HA3	2	0193 054 007	Solenoid valve	Before ser.no. 745-xxx-xxxx	13YV1, 13YV2
	1	0193 054 007	Solenoid valve	From ser.no. 745-xxx-xxxx	13YV1
HA3a	1	0193 598 001	Solenoid valve	From ser.no. 745-xxx-xxxx	13YV2
HA3b	1	0461 145 001	Quick connection	1/4"R From ser.no. 745-xxx-xxxx	
HA3c	1	0192 713 003	Hose nipple	1/4"R From ser.no. 745-xxx-xxxx	
HA4	1	0190 315 102	Hose	L=0.210 m, D=11/5.5mm, to be ordered per metre	
HA5	1	0465490001	Pressure guard		13SL1
HA6	1	0465489880	Pressure guard harness		
HA7	1	0461 033 001	Relay	48 V AC Before ser.no. 745-xxx-xxxx	13RE1
	2	0461 033 001	Relay	48 V AC From ser.no. 745-xxx-xxxx	13RE1, 13RE2
HA8	1	0461 034 001	Socket	Before ser.no. 745-xxx-xxxx	
	2	0461 034 001	Socket	From ser.no. 745-xxx-xxxx	
HA9	1		Bar		
HA10	1	0192 576 004	Lamp	42 – 48V	13HL1
HA11	3	0147 866 011	Switch		13SB1, 13SB2, 13SB3
HA12	1	0458 370 882	Water outlet	From ser.no. 745-xxx-xxxx Includes: ELP switch and 2 quick couplings fitted to a bracket	13S1
HA13	1	0368 544 005	Socket	23 pole panel socket	13XS16
	1	0368 544 003	Socket	12 pole panel socket	
		0323 945 003	Sleeve	For 12 and 23 pole sockets	
	1	0461 036 003	Connection plate	For 23 pole panel socket	
	1	0461 036 004	Connection plate	For 12 pole panel socket	



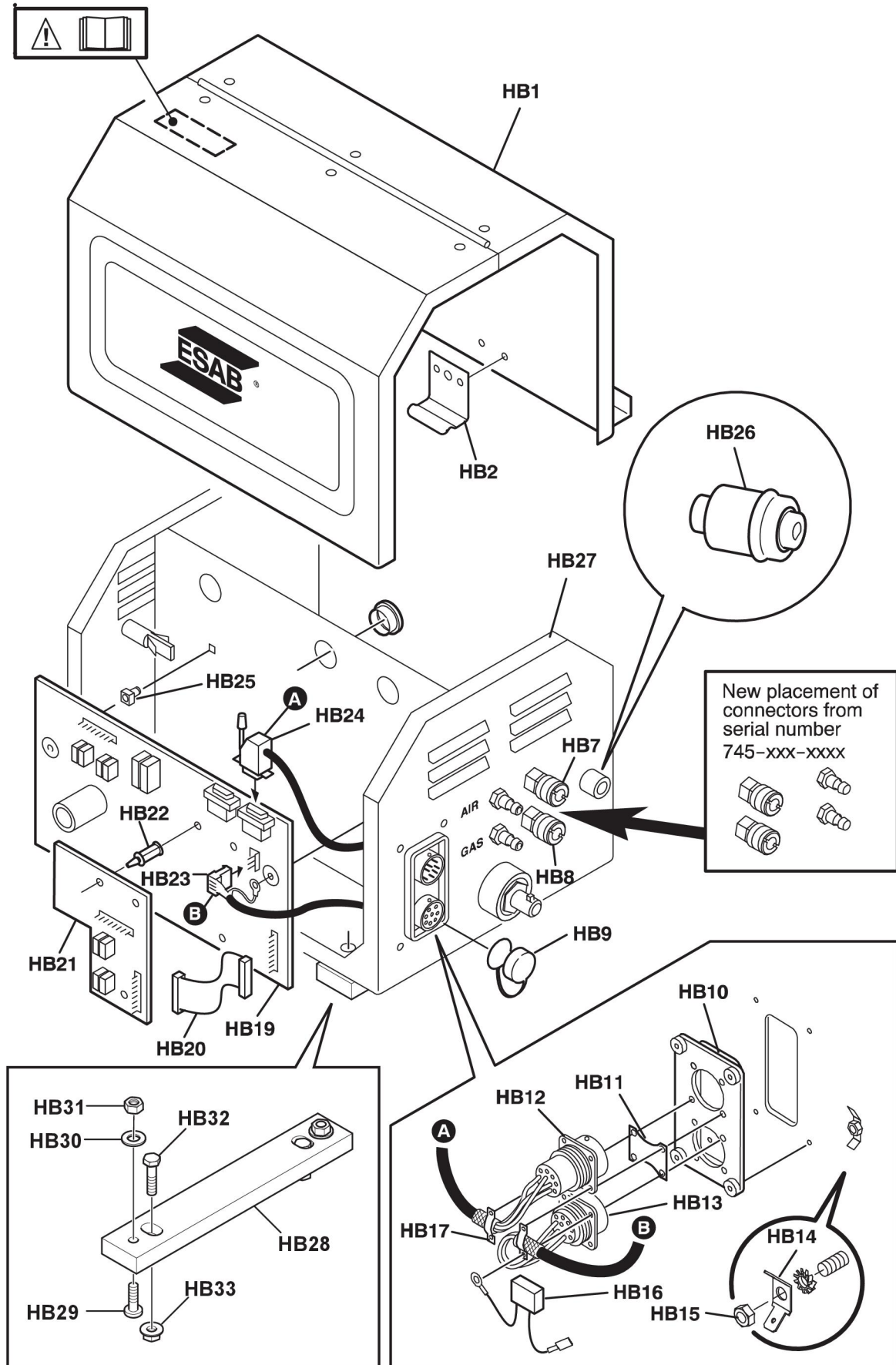
C = Component designation in the circuit diagram

Item	Qty	Ordering no.	Denomination	Notes	C
HA14	1	0365 803 017	Quick coupling, blue	Before ser.no. 745-xxx-xxxx Opens a nipple with non-return valve	
	1	0365 803 015	Quick coupling, blue	From ser.no. 745-xxx-xxxx Does not open a nipple with non-return valve	
HA15	1	0365 803 016	Quick coupling, red	Before ser.no. 745-xxx-xxxx Opens a nipple with non-return valve	
	1	0365 803 014	Quick coupling, red	From ser.no. 745-xxx-xxxx Does not open a nipple with non-return valve	
HA16	1	0190 315 102	Hose	L=0.3m, D=11/5.5mm, to be ordered per metre	
HA17	1	0365 803 002	Connector female	Quick coupling	
HA18	1	0160 609 881	Welding current terminal		
HA20	1		Spacer ring	Included in item HA18	
HA21	1		Washer	Included in item HA18	
HA22	1		Nut	Included in item HA18	
HA23	1		Washer	D22/10.5×2	
HA24	2		Spring washer	D20/10.2×1.1	
HA25	1		Screw	M10×20	
HA26	1	0467 911 881	Capacitor		13C2
HA27	1		Nut	M5	
HA28	1		Flat pin	5.3 mm	
HA29	1		Wire feed mechanism	Type MEM 30, see further on in this document.	
HA30	1	0458 678 004	Bar, flexible		
HA31	2	0190 315 102	Hose	L=0.3m, D=11/5.5mm, to be ordered per metre	
HA32	1	0456 496 001	Hose, red	L=0.16m, D=9/5mm, to be ordered per metre	



C = Component designation in the circuit diagram

Item	Qty	Ordering no.	Denomination	Notes	C
HB1	1	0461 118 880	Cover	Item HB2 is included	
HB2	1	0459 547 001	Spring lock		
HB7	1	0365 803 015	Connector female	Quick coupling, blue	
HB8	1	0365 803 014	Connector female	Quick coupling, red	
HB9	2	0366 285 001	Protection cap		
HB10	1	0457 801 001	Insulation		
HB11	1		Screen plate		
HB12	1	0368 543 003	Plug	12 pole panel plug	13XP2
		0323 945 004	Pin	For 12 pole plug	
HB13	1	0368 544 003	Socket	12 pole panel socket	13XS1
		0323 945 003	Sleeve	For 12 pole socket	
HB14	1		Flat pin	5.3 mm	
HB15	1		Nut	M5	
HB16	1	0467 911 884	Capacitor		13C3
HB17	2		Clamp		
	4	0461 032 001	Rubber damper	Discontinued and replaced by item HB28	
HB19	1	0487 187 886	Circuit board	Configured for RoboFeed 3004w	13AP1
HB20	1	0193 700 703	Ribbon cable	With connectors	13XS18
HB21	1	0487 083 880	Circuit board	Replacing 0487 307 882	13AP2
HB22	3	0192 790 106	Spacer		
HB23	1		Connector	4 pole	13XS3
HB24	1		Connector	D-SUB 9 pole	13XP1
HB25	4	0194 019 005	Spacer		
HB26	1	F102 440 880	Quick connector	Marathon Pac™	
HB27	1	0461 001 880	Bottom plate	Before ser.no. 745-xxx-xxxx	
	1	0461 001 881	Bottom plate	From ser.no. 745-xxx-xxxx	
	1	0461 004 881	Bottom plate	From ser.no. 310-xxx-xxxx To be ordered together with item HB28	
HB28	2	0465 275 001	Bakelit bar		
HB29	4		Screw MRT	M6×20	
HB30	4		Washer	12×6.4×1.5	
HB31	4		Nut	M6	
HB32	4		Hexagonal screw	M6×25	
HB33	4		Locking nut	M6	

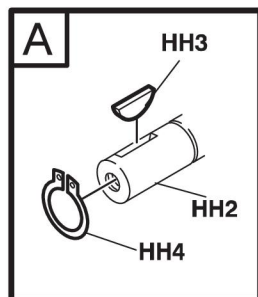
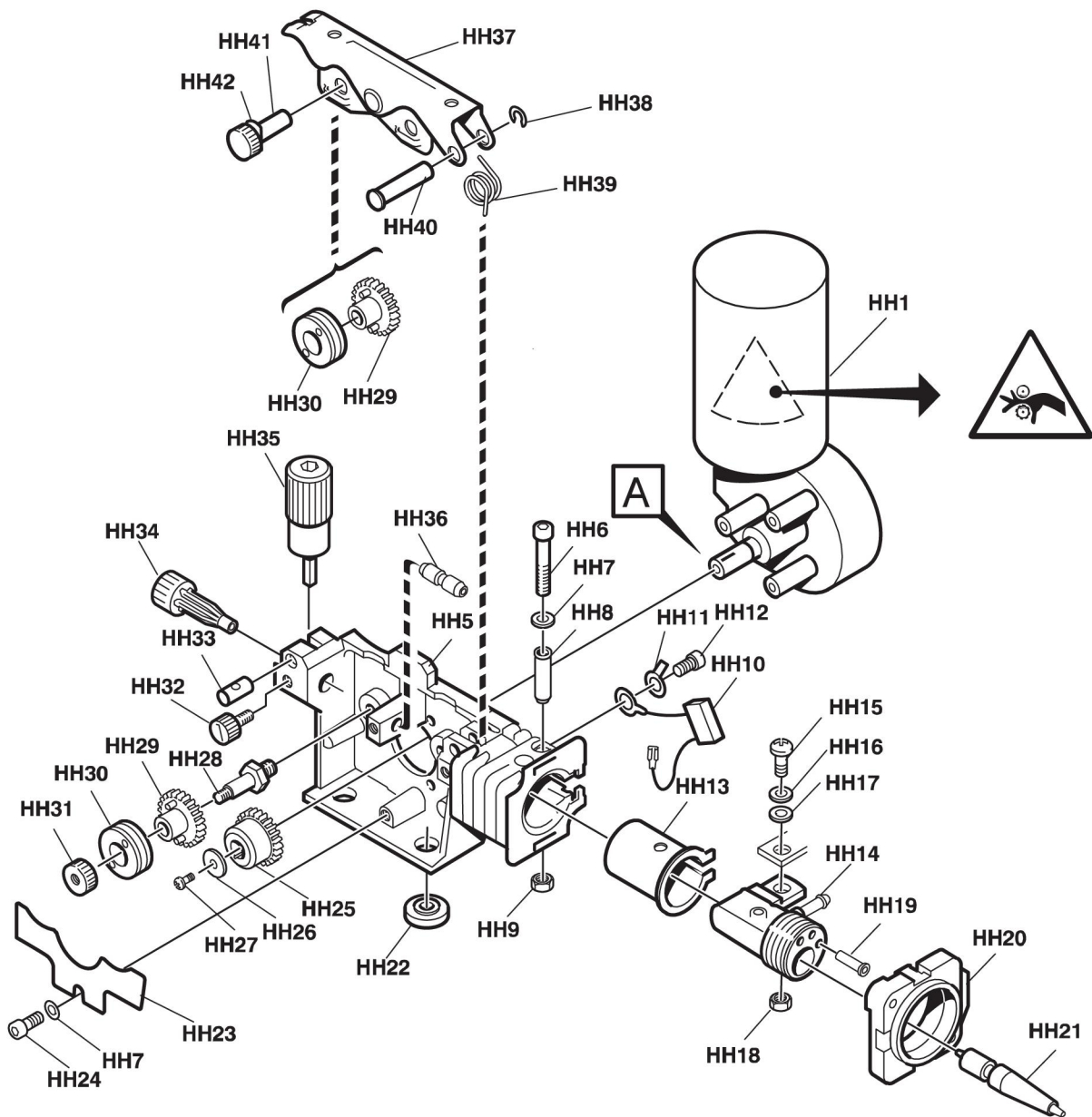


(W) = Wear part

C = Component designation in the circuit diagram

Item	Qty	Ordering no.	Denomination	Notes	C
		0459 000 889	Wire feed mechanism	Includes items HH1 – HH21 and HH23 – HH41, Type MEM 30	
HH1	1	0455 077 002	Drive unit	With pulse generator	13M1
HH2	1	0332 351 012	Shaft (with pinion)	Included in item HH1	
HH3	1	0191 496 114	Key	Included in item HH1	
HH4	1	0215 701 007	Locking washer	Included in item HH1	
HH5	1	0455 046 004	Gear housing		
HH6	1		Screw	M6×40	
HH7	2		Washer	Ø 12/6.4×1.5	
HH8	1	0455 048 001	Insulating tube		
HH9	1		Nut	M6	
HH10	1	0467 911 880	Capacitor	0.1 µF 250V with cable lugs	13C1
HH11	1		Flat pin	6.3×0.8 M6	
HH12	4		Screw	M6×12	
HH13	1	0455 045 001	Insulating sleeve		
HH14	1	0455 044 001	Current connection		
HH15	1		Screw	M8×25	
HH16	1		Washer	Ø 16/8.4×1.5	
HH17	1		Belleville washer	Ø 16/8.2×0.9	
HH18	1		Nut	M6	
HH19	2	0368 750 001	Insulating sleeve	For cable set	
	1	0459 229 880	Cable set		
HH20	1	0455 047 001	Front flange		
HH21	1	(W)	Outlet nozzle		
HH22	4	0153 043 002	Insulating washer		
HH23	1	0469 838 001	Cover		
HH24	3		Screw	M6×12	
HH25	1	(W)	Drive gear		
HH26	1		Washer	Ø 16/5×1	
HH27	1		Screw	M4×12	
HH28	2		Axle feed roll	See item HH102	
HH29	4	(W)	Gear adapter		
HH30	4	(W)	Feed/pressure roller		
HH31	2		Locking nut	See item HH102	
HH32	3	0458 689 001	Screw for nozzle		

For wear parts (W), see “Wear parts”, page 14.



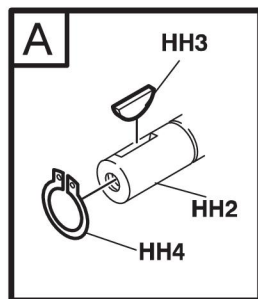
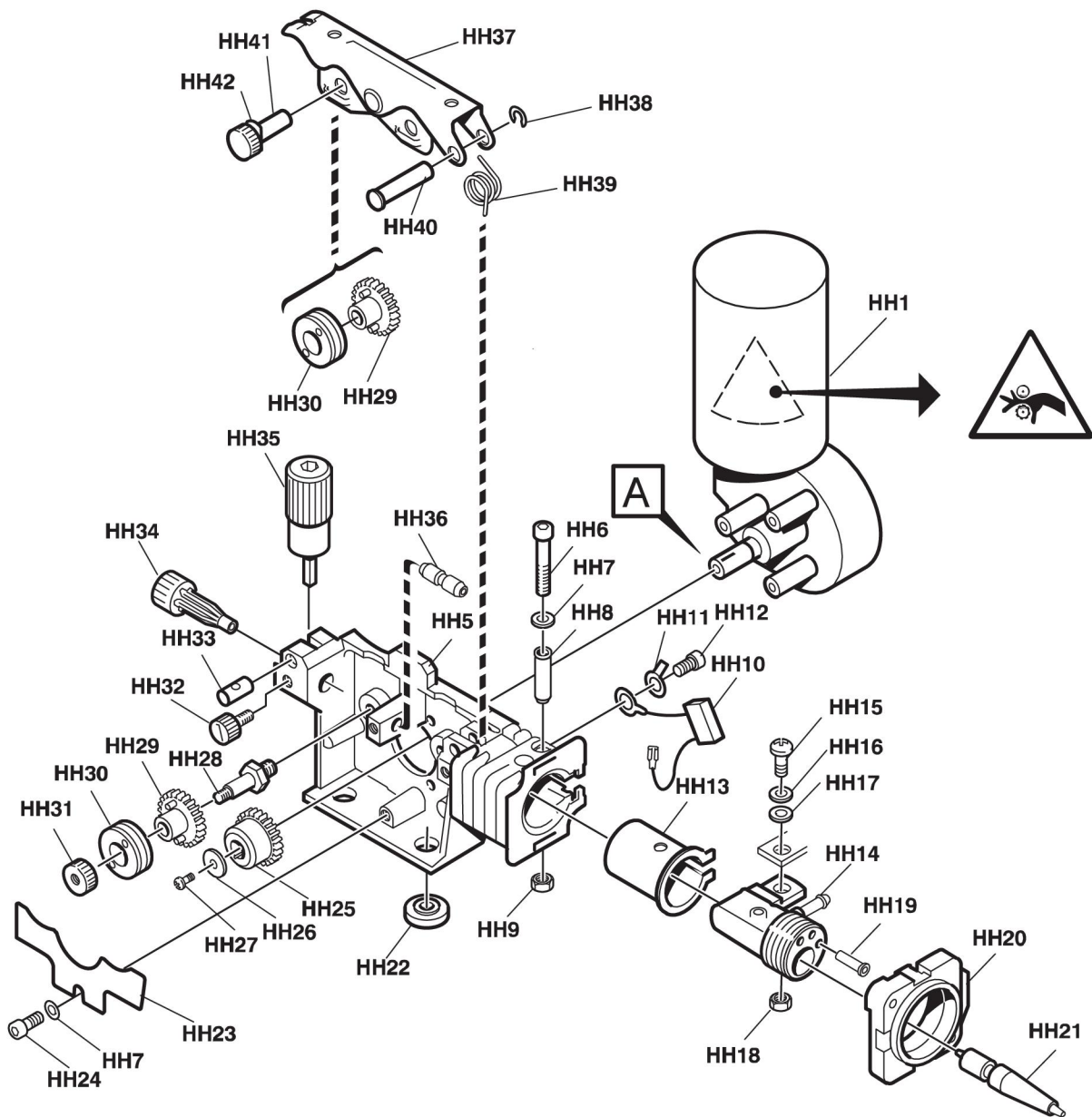
(W) = Wear part**C = Component designation in the circuit diagram**

Item	Qty	Ordering no.	Denomination	Notes	C
HH33	1		Pin bolt	See item HH101	
HH34	1	(W)	Inlet nozzle		
HH35	1		Pressure device	See item HH101	
HH36	1	(W)	Intermediate nozzle		
HH37	1		Pressure arm	See item HH100	
HH38	1		Locking washer	See item HH100	
HH39	1		Torsion spring	See item HH100	
HH40	1		Shaft	See item HH100	
HH41	2	0458 999 001	Shaft		
HH42	2	0461 150 001	Locking pin (spring)		

For wear parts (W), see **“Wear parts”**, page 14.

SPARE PARTS SETS

Item	Ordering no.	Denomination	Notes
HH100	0459 227 880	Pressure arm set	Includes items HH37, HH38, HH39 and HH40
HH101	0459 228 880	Pressure device set	Includes items HH33, HH35 and one screw M3×12
HH102	0458 722 880	Axle and nut	Includes items HH28 and HH31



WEAR PARTS

Item	Ordering number	Denomination	Wire type	Wire dimensions
HI 1	0455 072 002	Intermediate nozzle	Fe, Ss & cored	
	0456 615 001	Intermediate nozzle	Al	
HI 2	0469 837 880	Outlet nozzle	Fe, Ss & cored	Ø 2.0 mm steel for 0.6–1.6 mm
	0469 837 881	Outlet nozzle	Al	Ø 2.0 mm plastic for 0.8–1.6 mm
	0469 837 882	Outlet nozzle	Fe, Ss & cored	Ø 3.4 mm steel for 1.6–2.4 mm
HI 3	0191 496 114	Key		
HI 4	0215 701 007	Locking washer		
HI 5a	0459 440 001	Motor gear euro, drive gear		

Item	Ordering number	Denomination	Wire type	Wire dimensions (mm)	Groove type	Roller markings
HI 5b	0459 052 001	Feed/pressure rollers	Fe, Ss & cored	Ø 0.6 & 0.8	V	0.6 & 0.8 S2
	0459 052 002	Feed/pressure rollers	Fe, Ss & cored	Ø 0.8 & 1.0	V	0.8 S2 & 1.0 S2
	0459 052 003	Feed/pressure rollers	Fe, Ss & cored	Ø 0.9/1.0 & 1.2	V	1.0 & 1.2 S2
	0459 052 013	Feed/pressure rollers	Fe, Ss & cored	Ø 1.4 & 1.6	V	1.4 & 1.6 S2
	0458 825 001	Feed/pressure rollers	Cored	Ø 0.9/1.0 & 1.2	V-knurled	1.0 & 1.2 R2
	0458 825 002	Feed/pressure rollers	Cored	Ø 1.2 & 1.4	V-knurled	1.2 & 1.4 R2
	0458 825 003	Feed/pressure rollers	Cored	Ø 1.6	V-knurled	1.6 & 2.0 R2
	0458 824 001	Feed/pressure rollers	Al	Ø 0.8 & 0.9/1.0	U	0.8 & 1.0 A2
	0458 824 002	Feed/pressure rollers	Al	Ø 1.0 & 1.2	U	1.0 & 1.2 A2
	0458 824 003	Feed/pressure rollers	Al	Ø 1.2 & 1.6	U	1.2 & 1.6 A2
	0458 874 002	Feed/pressure rollers	Al	Ø 1.0 & 1.2	U	1.0 & 1.2 A2

Only use pressure and feed rollers marked **A2**, **R2** or **S2**.
The rollers are marked with wire dimension in mm, some are also marked with inch.

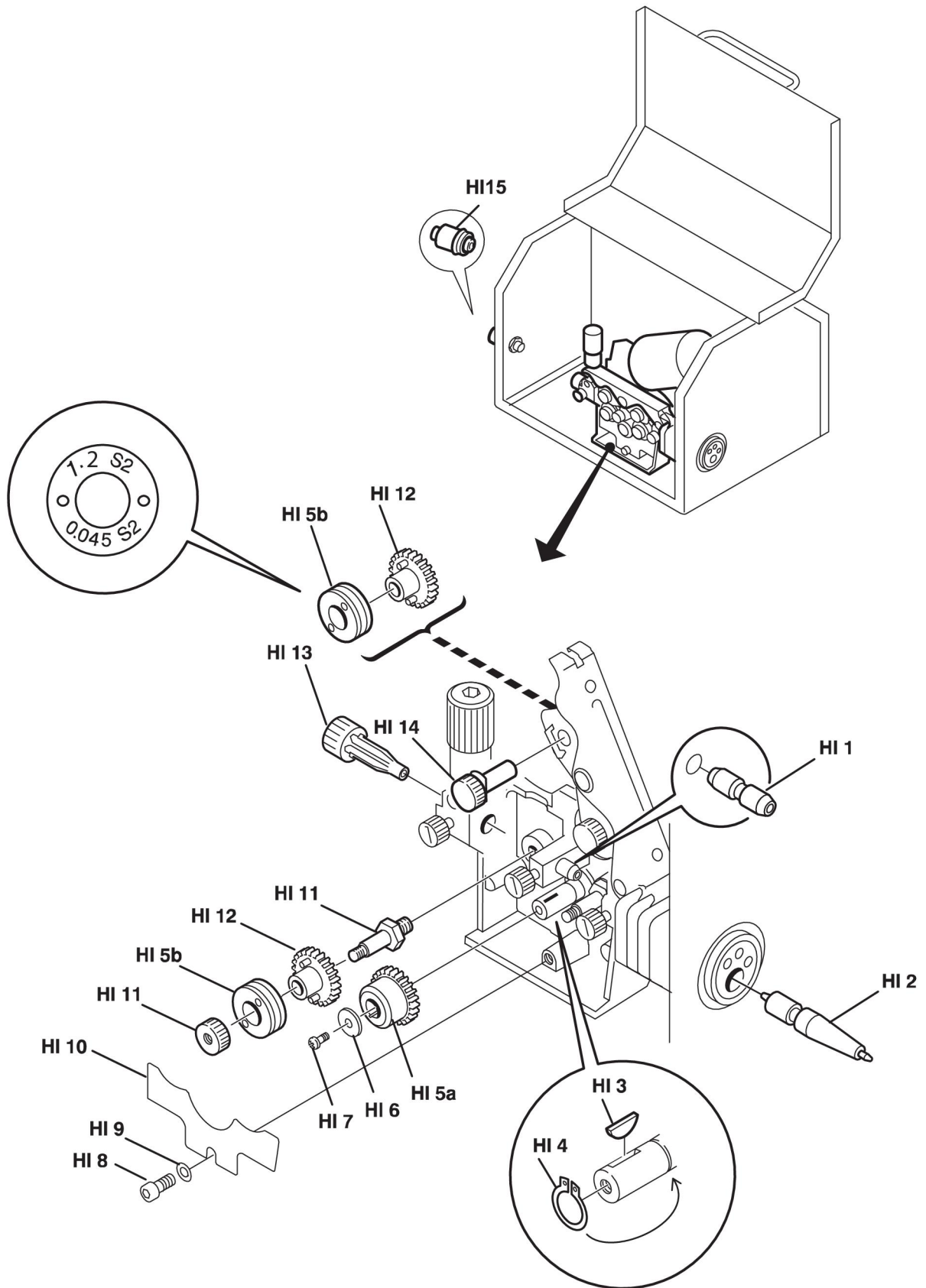
For illustration of wear parts, see next spread in this document.

WEAR PARTS

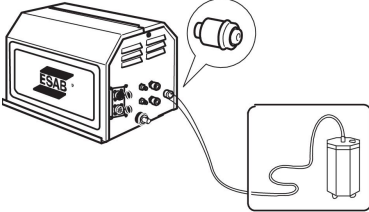
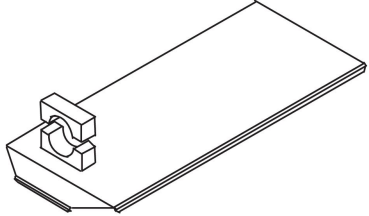
Item	Ordering number	Denomination	Notes
HI 6		Washer	Ø 16/5×1
HI 7		Screw	M4×12
HI 8		Screw	M6×12
HI 9		Washer	Ø 16/8.4×1.5
HI 10	0469 838 001	Cover	
HI 11	0458 722 880	Axle and Nut	
HI 12	0459 441 880	Gear adapter	
	0455 053 881	Gear adapter	Heavy duty with needle bearing
HI 13	0455 049 001	Inlet nozzle	Ø 3mm for 0.6–1.6mm Fe, Ss, Al and cored wire
HI 14	0458 999 001	Shaft	
HI 15	F102 440 880	Quick connector	For Marathon Pac™

Welding with aluminium wire

In order to weld with aluminium wire, proper rollers, nozzles and liners for aluminium wire **must** be used. It is recommended to use 3 m long welding torch for aluminium wire, equipped with appropriate wear parts.



ACCESSORIES

F102 440 880	Quick connector MarathonPac™	 A technical drawing of the MarathonPac quick connector. It is a rectangular metal box with the 'ESAB' logo on the front. On the right side, there are several electrical terminals. A cable with a circular connector is shown plugged into one of the terminals. A callout bubble points to this connector. To the right, a separate inset shows a battery pack with a cable connected to it, illustrating the power source for the connector.
0461 173 880	Adapter plate for mounting on the robot arm	 A technical drawing of a rectangular metal adapter plate. It has a raised edge on one side and a circular hole with a flange on the opposite side, designed for mounting onto a robot arm.

ESAB subsidiaries and representative offices

Europe

AUSTRIA

ESAB Ges.m.b.H
Vienna-Liesing
Tel: +43 1 888 25 11
Fax: +43 1 888 25 11 85

BELGIUM

S.A. ESAB N.V.
Heist-op-den-Berg
Tel: +32 15 25 79 30
Fax: +32 15 25 79 44

BULGARIA

ESAB Kft Representative Office
Sofia
Tel: +359 2 974 42 88
Fax: +359 2 974 42 88

THE CZECH REPUBLIC

ESAB VAMBERK s.r.o.
Vamberk
Tel: +420 2 819 40 885
Fax: +420 2 819 40 120

DENMARK

Aktieselskabet ESAB
Herlev
Tel: +45 36 30 01 11
Fax: +45 36 30 40 03

FINLAND

ESAB Oy
Helsinki
Tel: +358 9 547 761
Fax: +358 9 547 77 71

GREAT BRITAIN

ESAB Group (UK) Ltd
Waltham Cross
Tel: +44 1992 76 85 15
Fax: +44 1992 71 58 03

ESAB Automation Ltd
Andover

Tel: +44 1264 33 22 33
Fax: +44 1264 33 20 74

FRANCE

ESAB France S.A.
Cergy Pontoise
Tel: +33 1 30 75 55 00
Fax: +33 1 30 75 55 24

GERMANY

ESAB Welding & Cutting GmbH
Langenfeld
Tel: +49 2173 3945-0
Fax: +49 2173 3945-218

HUNGARY

ESAB Kft
Budapest
Tel: +36 1 20 44 182
Fax: +36 1 20 44 186

ITALY

ESAB Saldatura S.p.A.
Bareggio (Mi)
Tel: +39 02 97 96 8.1
Fax: +39 02 97 96 87 01

THE NETHERLANDS

ESAB Nederland B.V.
Amersfoort
Tel: +31 33 422 35 55
Fax: +31 33 422 35 44

NORWAY

AS ESAB
Larvik
Tel: +47 33 12 10 00
Fax: +47 33 11 52 03

POLAND

ESAB Sp.zo.o.
Katowice
Tel: +48 32 351 11 00
Fax: +48 32 351 11 20

PORTUGAL

ESAB Lda
Lisbon
Tel: +351 8 310 960
Fax: +351 1 859 1277

ROMANIA

ESAB Romania Trading SRL
Bucharest
Tel: +40 316 900 600
Fax: +40 316 900 601

RUSSIA

LLC ESAB
Moscow
Tel: +7 (495) 663 20 08
Fax: +7 (495) 663 20 09

SLOVAKIA

ESAB Slovakia s.r.o.
Bratislava
Tel: +421 7 44 88 24 26
Fax: +421 7 44 88 87 41

SPAIN

ESAB Ibérica S.A.
San Fernando de Henares
(MADRID)
Tel: +34 91 878 3600
Fax: +34 91 802 3461

SWEDEN

ESAB Sverige AB
Gothenburg
Tel: +46 31 50 95 00
Fax: +46 31 50 92 22

ESAB International AB

Gothenburg
Tel: +46 31 50 90 00
Fax: +46 31 50 93 60

SWITZERLAND

ESAB Europe GmbH
Baar
Tel: +41 1 741 25 25
Fax: +41 1 740 30 55

UKRAINE

ESAB Ukraine LLC
Kiev
Tel: +38 (044) 501 23 24
Fax: +38 (044) 575 21 88

North and South America

ARGENTINA

CONARCO
Buenos Aires
Tel: +54 11 4 753 4039
Fax: +54 11 4 753 6313

BRAZIL

ESAB S.A.
Contagem-MG
Tel: +55 31 2191 4333
Fax: +55 31 2191 4440

CANADA

ESAB Group Canada Inc.
Mississauga, Ontario
Tel: +1 905 670 0220
Fax: +1 905 670 4879

MEXICO

ESAB Mexico S.A.
Monterrey
Tel: +52 8 350 5959
Fax: +52 8 350 7554

USA

ESAB Welding & Cutting
Products
Florence, SC
Tel: +1 843 669 4411
Fax: +1 843 664 5748

Asia/Pacific

AUSTRALIA

ESAB South Pacific
Archerfield BC QLD 4108
Tel: +61 1300 372 228
Fax: +61 7 3711 2328

CHINA

Shanghai ESAB A/P
Shanghai
Tel: +86 21 2326 3000
Fax: +86 21 6566 6622

INDIA

ESAB India Ltd
Calcutta
Tel: +91 33 478 45 17
Fax: +91 33 468 18 80

INDONESIA

P.T. ESABindo Pratama
Jakarta
Tel: +62 21 460 0188
Fax: +62 21 461 2929

JAPAN

ESAB Japan
Tokyo
Tel: +81 45 670 7073
Fax: +81 45 670 7001

MALAYSIA

ESAB (Malaysia) Snd Bhd
USJ
Tel: +603 8023 7835
Fax: +603 8023 0225

SINGAPORE

ESAB Asia/Pacific Pte Ltd
Singapore
Tel: +65 6861 43 22
Fax: +65 6861 31 95

SOUTH KOREA

ESAB SeAH Corporation
Kyungnam
Tel: +82 55 269 8170
Fax: +82 55 289 8864

UNITED ARAB EMIRATES

ESAB Middle East FZE
Dubai
Tel: +971 4 887 21 11
Fax: +971 4 887 22 63

Africa

EGYPT

ESAB Egypt
Dokki-Cairo
Tel: +20 2 390 96 69
Fax: +20 2 393 32 13

SOUTH AFRICA

ESAB Africa Welding & Cutting
Ltd
Durbanville 7570 - Cape Town
Tel: +27 (0)21 975 8924

Distributors

For addresses and phone numbers to our distributors in other countries, please visit our home page

www.esab.com



www.esab.com

